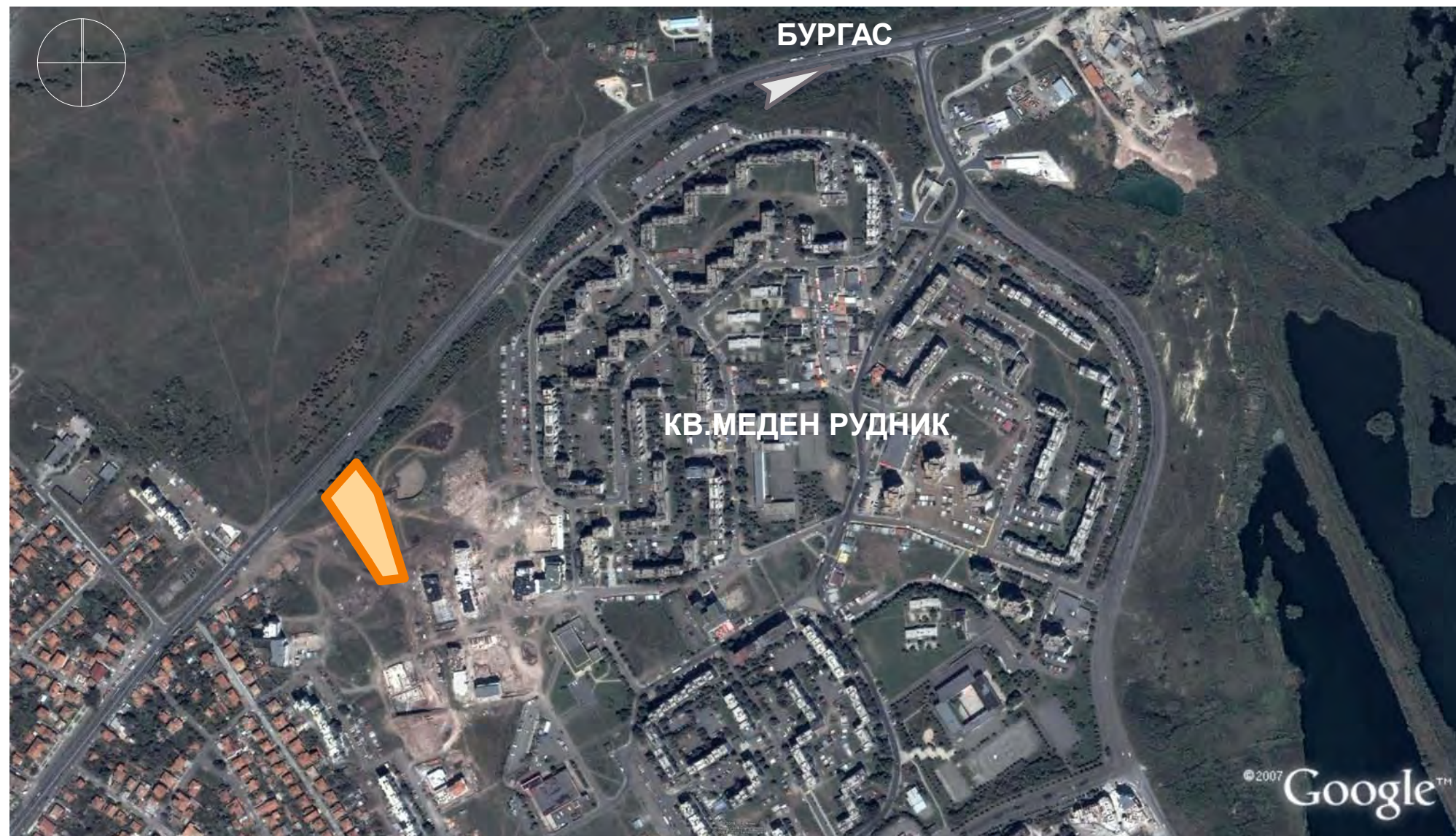




RESIDENTIAL COMPLEX & SHOPPING CENTRE - MEDEN RUDNIK



LOCATION

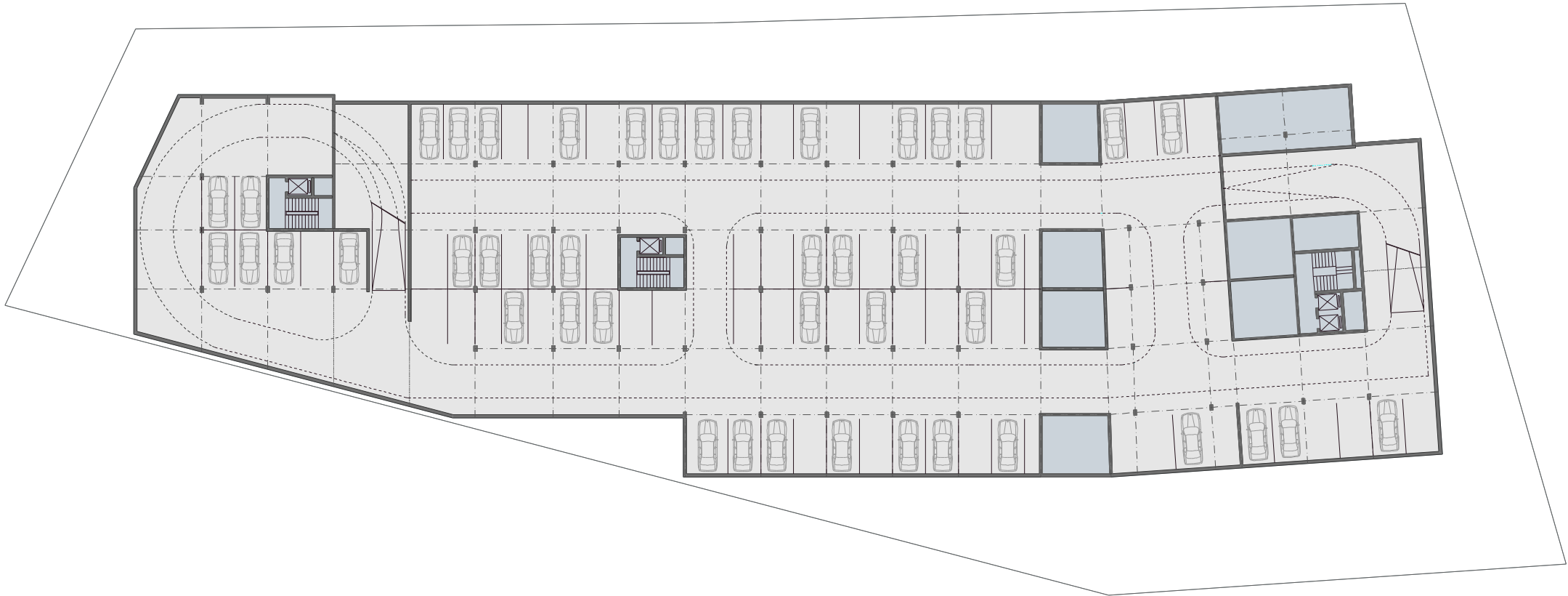
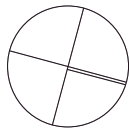


PLOT AREA	5 555 sq.m
PRINT FOOT AREA	2 315 sq.m
BUILT - UP AREA	1 665 sq.m
BUILT - UP UNDERGROUND AREA	7 230 sq.m
TOTAL BUILT-UP AREA	23 895 sq.m
GARDEN AREA	1 035 sq.m
ROOF GARDEN AREA	635 sq.m
TOTAL LANDSCAPING AREA	1 670 sq.m

SITE PLAN

FLOOR	COMMUNICATION, SERVICES & STORES (sq.m)	PARKING AREA (sq.m)	STORAGES (sq.m)	SHOPPING AREA (sq.m)	OFFICES (sq.m)	CAFETERIA (sq.m)	RESIDENTIAL AREA (sq.m)	TOTAL (sq.m per floor)
Second basement floor	675	2940	-	-	-		-	3615
First basement floor	980	1810	825	-	-	-	-	3615
Ground floor	460	-	100	1200	490	65	-	2315
Mezzanine	475	-	125	1225	560	115	-	2500
First floor	555	-	-	-	1200	95	-	1850
Typical floors	1640	-	-	-	-	-	8360	10000
TOTAL	4785	4750	1050	425	2250	275	8360	24895

SUMMARY OF THE AREAS

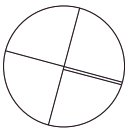


LEGEND:

	PARKING AREA - 84 PARKING LOTS	2940sq.m
	COMMUNICATIONS, SERVICES, STORES	675sq.m
	TOTAL AREA	3615sq.m

SECOND BASEMENT FLOOR

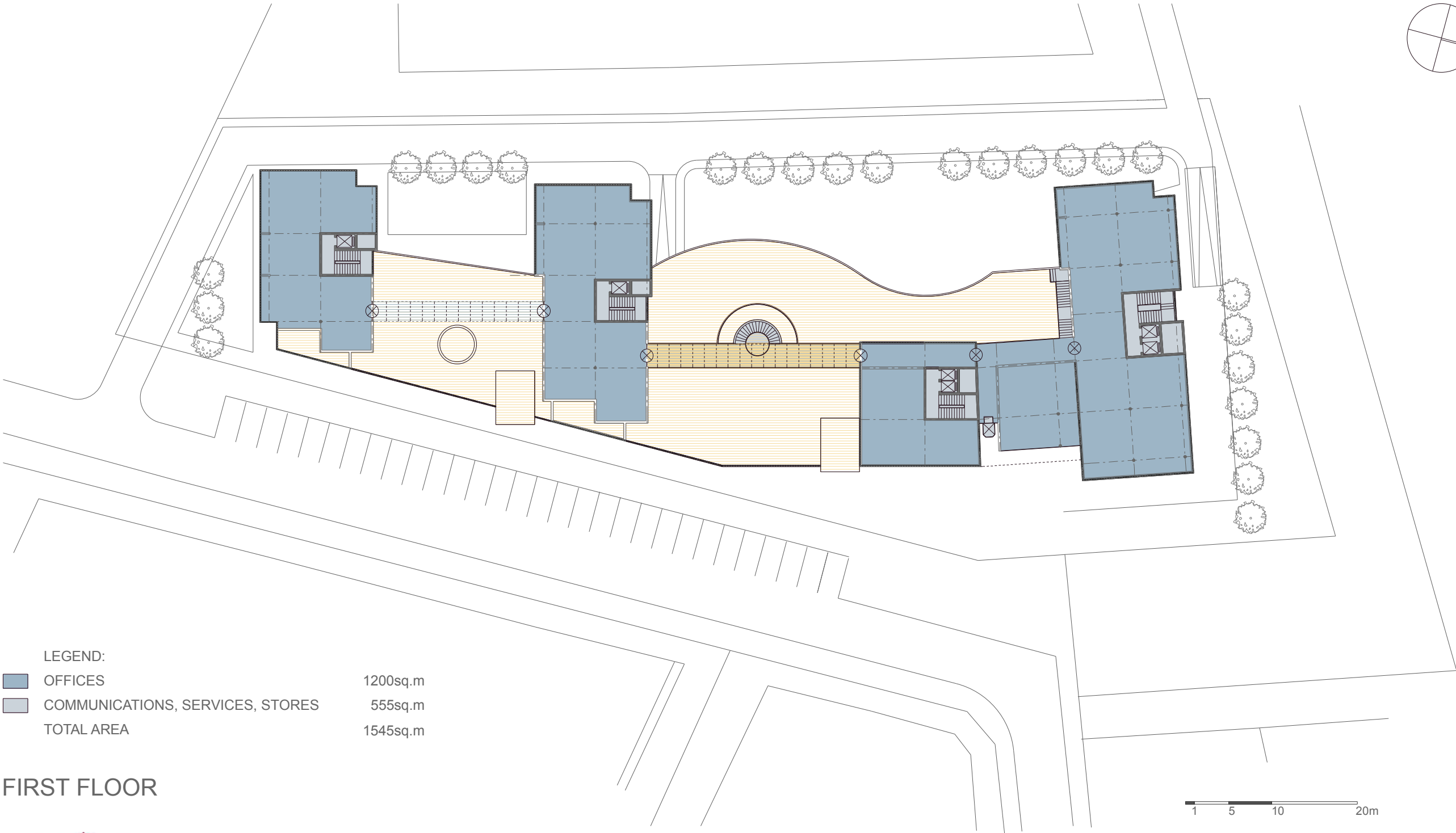




FIRST BASEMENT FLOOR











PERSPECTIVE VIEW



PERSPECTIVE VIEW



PERSPECTIVE VIEW