





ATHENA RESORT

Apartment complex

SITE PLAN S 1:1250

Legend:

1. Main entrance and reception
2. Main parking=45 cars
3. Lobby Bar
4. Main Pool Bar A / B
5. Luxury Restaurant
6. SPA-Centre & Beauty Zone
7. Barbeque & Grill Bar
8. Parking House B= 25 cars
9. Kitchen Supply
10. VIP Pool Bar
11. Jacuzzi Zone
12. Sport Zone&Covered Pool-Basement
13. Second Lobby Bar & Pastry shop between Sport Zone and Conference block
14. Conference block with multifunctional hall - Basement
15. Night club & Piano Bar - Basement
16. Covered connection between SPA(6) and Sport Zone(12) and House A&B
17. Underground parking entrance
18. Multifunctional playground with fresh bar and changing rooms
19. Laundry
20. Kindergarten and attractions
21. Kids pool

House Type	Parking Places	Build up area (All Parters area) m ²	TOTAL AREA (with basement) m ²
HOUSE - A hotel building	70	4050.00	17 500.00
HOUSE - B	25	4250.00	18 650.00
HOUSE - C	8	1 000.00	3 000.00
HOUSE - D	8	800.00	2 700.00
HOUSE - E	8	900.00	2 900.00
HOUSE - F1	2	150.00	280.00
HOUSE - F2	2	150.00	280.00
HOUSE - F3	2	150.00	280.00
HOUSE - F4	2	150.00	280.00
HOUSE - F5	2	150.00	280.00
HOUSE - G1	2	180.00	320.00
HOUSE - G2	2	180.00	320.00
HOUSE - H1	2	200.00	350.00
HOUSE - H2	2	200.00	350.00
BBQ & Grill Bar		270.00	270.00
POOL BAR - A		90.00	90.00
POOL BAR - B		75.00	75.00
VIP POOL BAR		75.00	75.00
TOTAL AREA - ATHENA RESORT		12 510.00	48 000.00
		26,45% from 48 805 m2(plot)	Project Q int.: ~ 0.9
		Property number: 8334,8335,8339,8440,8099 SUM - Plots = 48 805 m2	

Note: We project HOUSE - A with possibility to work like HOTEL



ATHENA RESORT and PERSEFONY RESORT

SITE PLAN AND LOCATION MAP



PERSEFONY RESORT

Apartment complex

SITE PLAN S1:1250

Legend:

1. Main entrance and reception
2. Main parking=30 cars
3. Lobby Bar
4. Massages, cosmetics, medicine and high care centre with fresh bar, consulting room and changing rooms
5. Barbeque & Grill Bar
6. Thematic Restaurant(Balkan) at two levels -3.60/-6.60
7. Kitchen Supply
8. Main Pool Bar - I
9. Kindergarten
10. VIP Pool Bar
11. Jacuzzi Zone
12. Kids pool
13. Underground parking entrance
14. Laundry
15. Lobby supply
16. BBQ+Grill bar supply
17. Sky and Cigar Bar
- 17a. Terrace Sky and Cigar Bar

House Type	Parking Places	Build up area m ²	TOTAL AREA (with basement) m ²
HOUSE - I (I)	55	3585.00	16 050.00
HOUSE - II (II)	8	900.00	2 500.00
HOUSE - III (III)	8	1000.00	2 600.00
HOUSE - IV (IV)	4	800.00	2 400.00
HOUSE - V (V)	10	1300.00	3 200.00
HOUSE - F6	2	150.00	280.00
HOUSE - F7	2	150.00	280.00
HOUSE - F8	2	150.00	280.00
HOUSE - H3	2	200.00	350.00
TOTAL AREA - PERSEFONY RESORT		8 265.00	27 940.00
		27,54 % from 30 012 m2(plot)	Project Q int.: ~ 9.31
		Property number: 10204, 10205, 10206, 10217, 10193 SUM - Plots = 30 012 m2	

Note: We project HOUSE - I with possibility to work like HOTEL

Note:

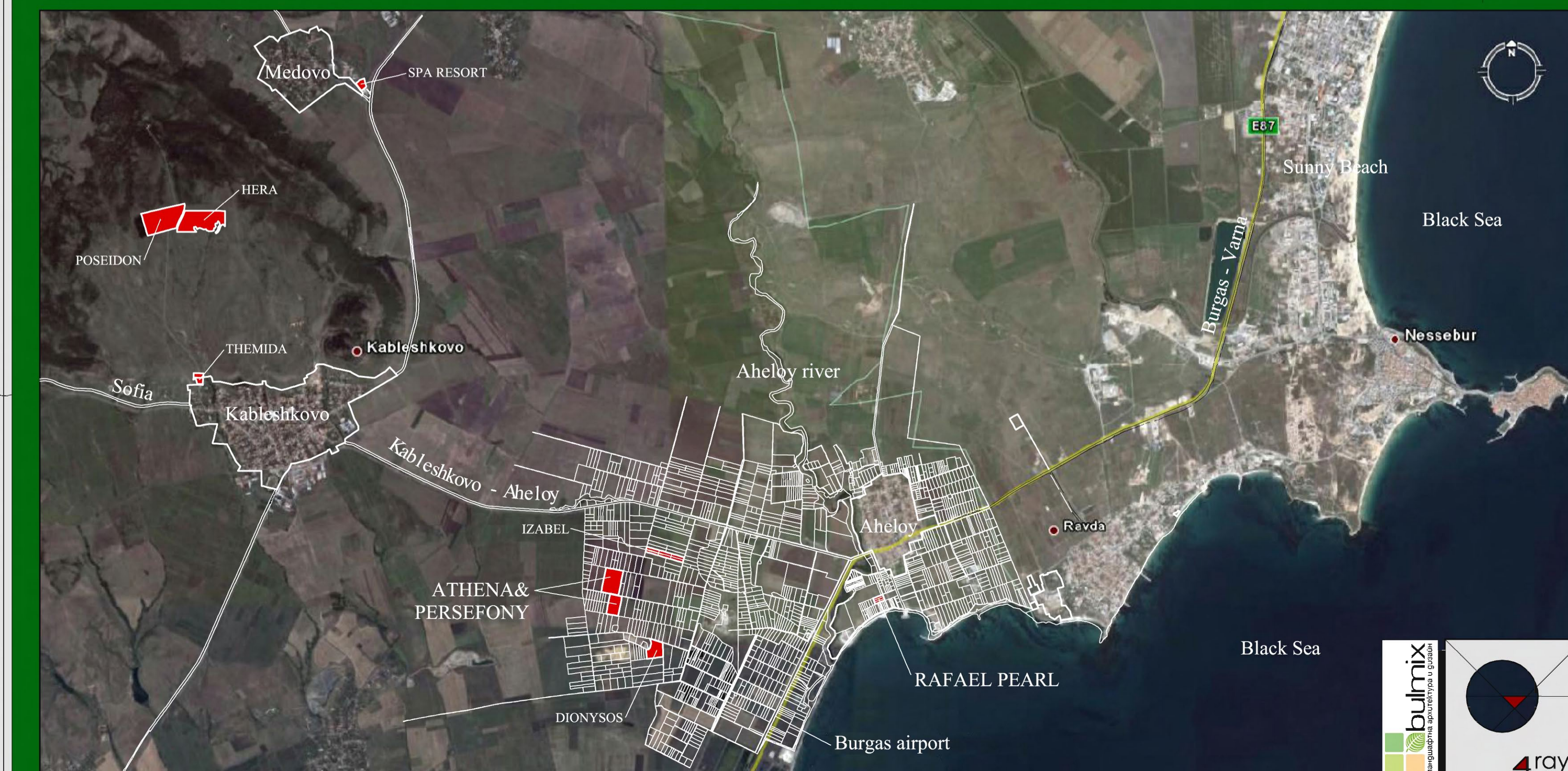
If we look the buildings from the sea(East-Southeast) because the plot is with different terrain levels the H of the buildings are as list below :

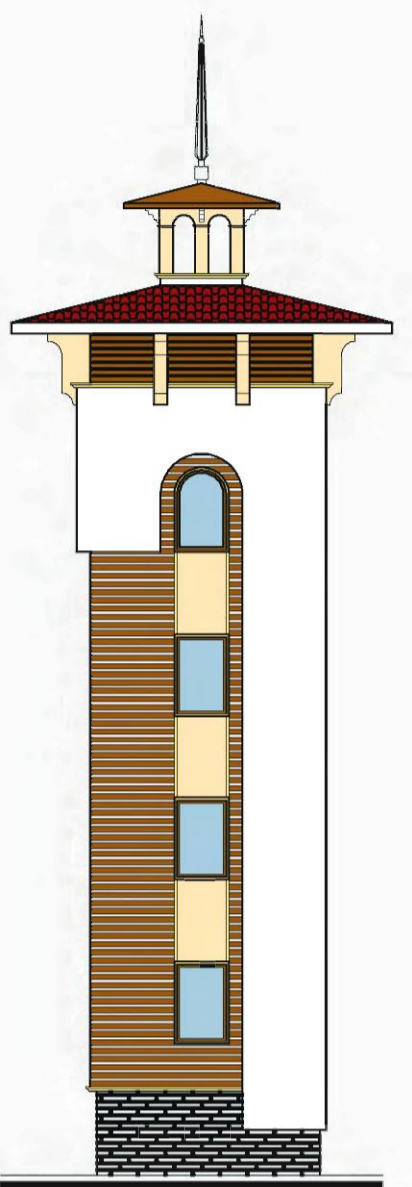
ATHENA RESORT

HOUSE - A - 5 floors from the sea, 4 floors from the back
HOUSE - B - 3 floors from the sea, 2 floors from the back
HOUSE - C, D, E - 3 floors from the sea, 2 floors from the back
HOUSE - F1, F2, F3, F4, F5 - 2 floors from the sea
HOUSE - G1, G2 - 2 floors from the sea
HOUSE - H1, H2 - 2 floors from the sea

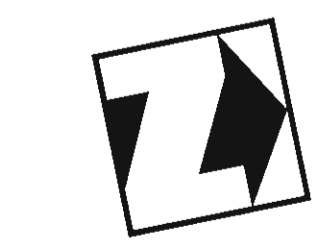
PERSEFONY RESORT

HOUSE - I - 5 floors from the sea, 4 floors from the back
HOUSE - II - 3 floors from the sea, 2 floors from the back
HOUSE - III - 3 floors from the sea, 2 floors from the back
HOUSE - F6 - 2 floors from the sea, 1 floors from the back
HOUSE - G3 - 2 floors from the sea, 1 floors from the back
HOUSE - H3 - 2 floors from the sea, 1 floors from the back

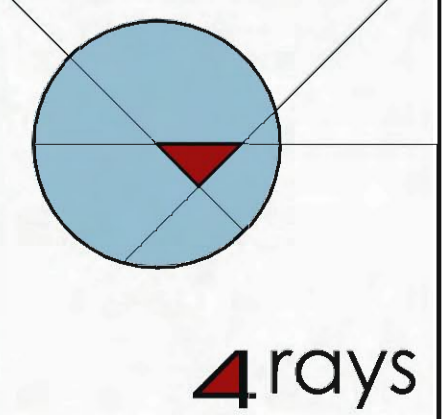




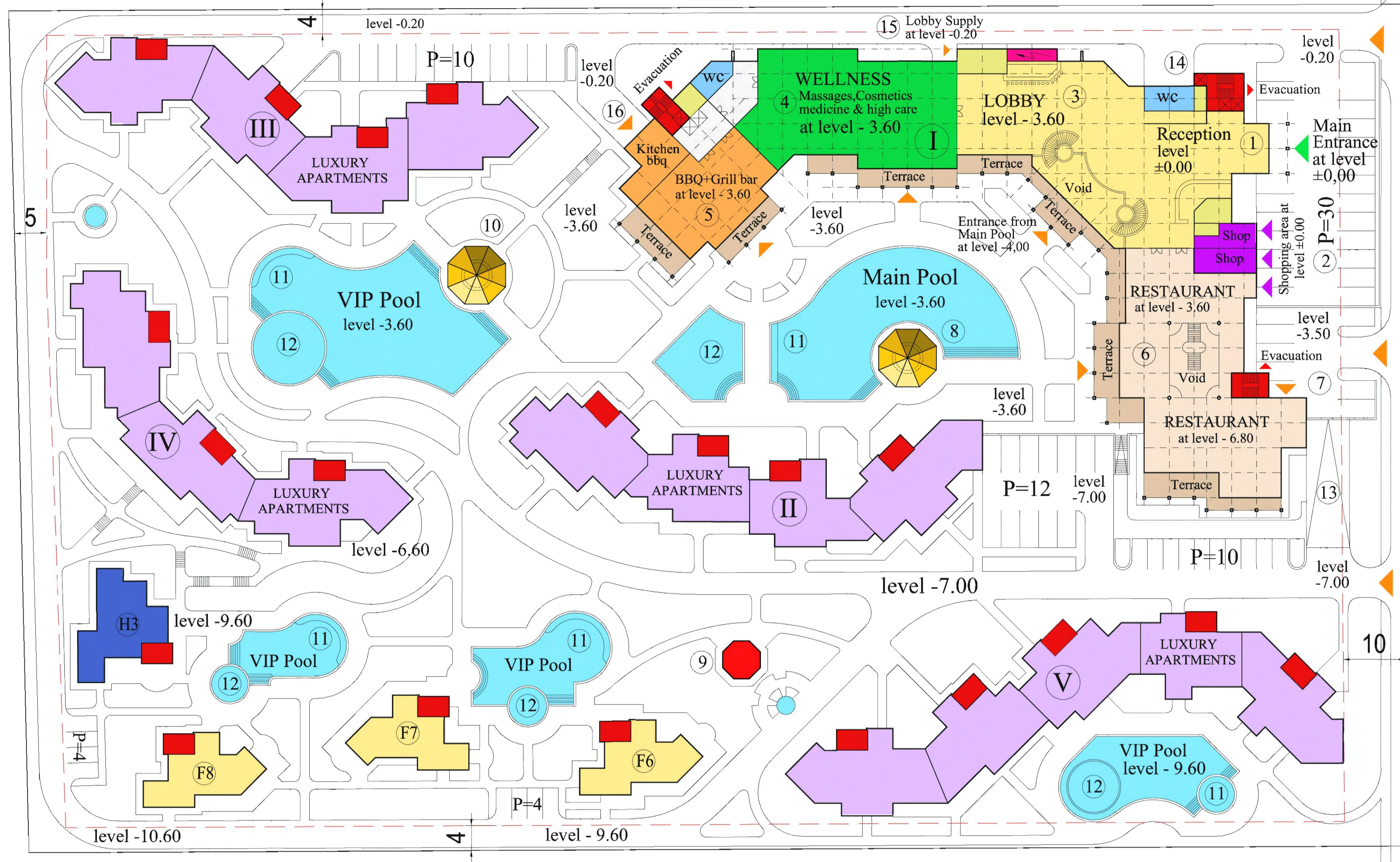
TOWER DETAIL



Note: We project HOUSE - I with possibility to work like HOTEL
There is two level restaurant in this project, because the plot is with different terrain levels.
There is Sky and Cigar Bar at the top of HOUSE I with a big terrace.



FUNCTIONAL PLAN OF PERSEFONY RESORT Scale 1:1000



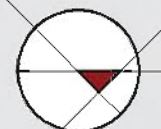
ELEVATION - SILHOUETTE

ELEVATION - SILHOUETTE

- Legend:**
- 1. Main entrance and reception
 - 2. Main parking=30 cars
 - 3. Lobby Bar
 - 4. Massages, cosmetics, medicine and high care centre with fresh bar consulting room and changing rooms
 - 5. Barbeque & Grill Bar
 - 6. Thematic Restaurant(Balkan) at two levels -3.60/-6.60
 - 7. Kitchen Supply
 - 8. Main Pool Bar - I
 - 9. Kindergarten
 - 10. VIP Pool Bar
 - 11. Jacuzzi Zone
 - 12. Kids pool
 - 13. Underground parking entrance Parking capacity - 25 cars
 - 14. Laundry
 - 15. Lobby supply
 - 16. BBQ+Grill bar supply
 - Shopping area at level ±0.00
 - Chambermaid office & Staff rooms
 - Stairs , Elevators, Communications
 - LUXURY APARTMENTS - II / III / IV / V Apartments from 200 m2 to 300 m2
 - SINGLE FAMILY HOUSES - TYPE F 280 m2
 - SINGLE FAMILY HOUSES - TYPE H 350 m2

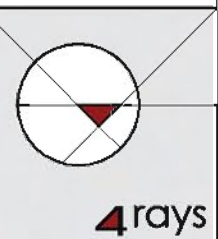


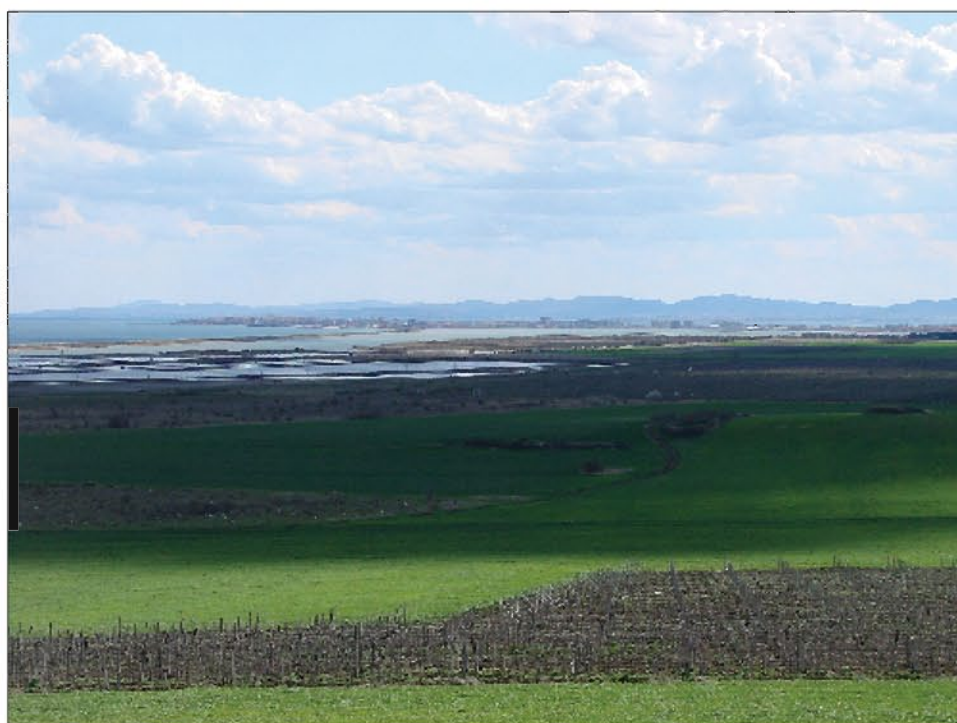
ELEVATION - SILHOUETTE B-B OF PERSEFONY RESORT Scale 1:500



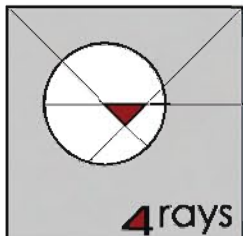


NORTH ELEVATION - HOUSE I OF PERSEFONY RESORT S1:250



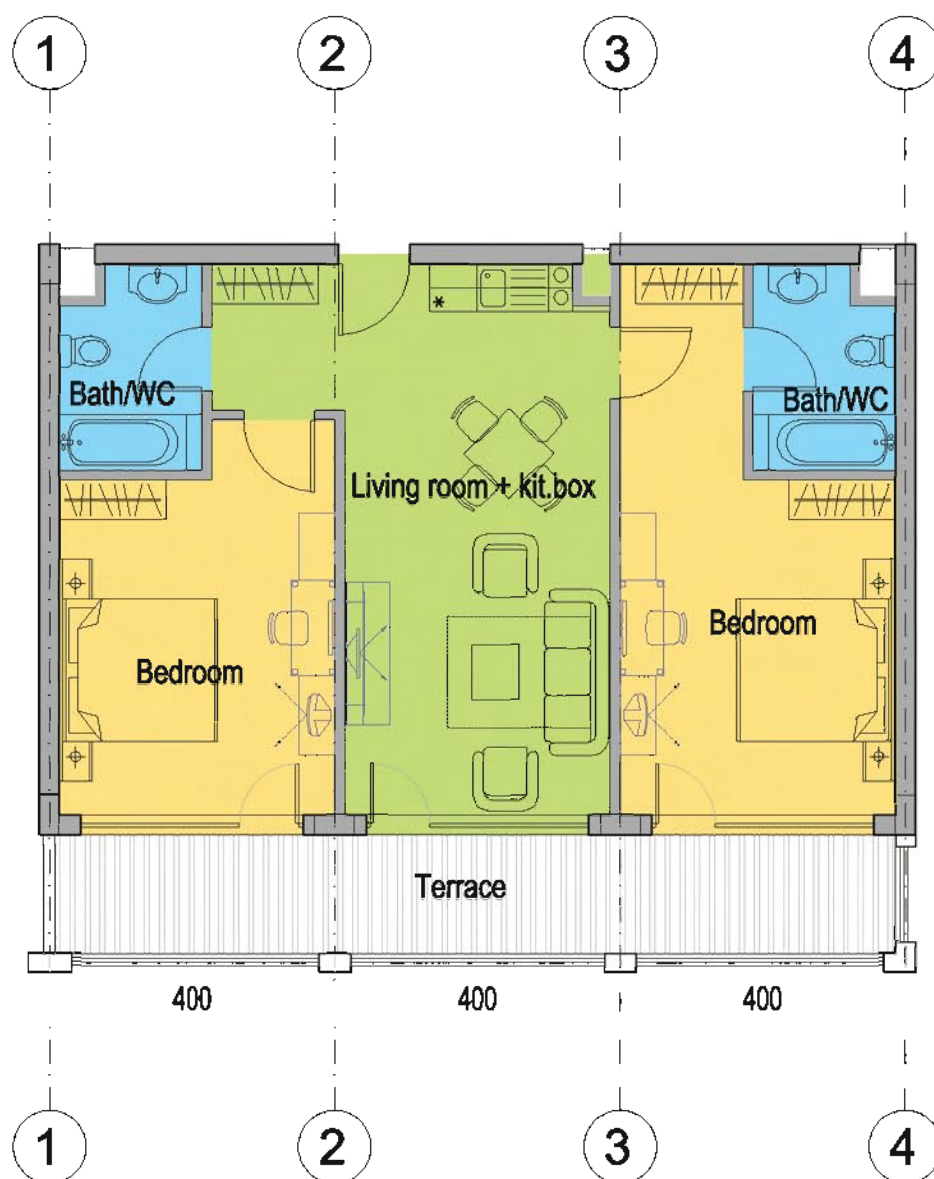


ELEVATION FRAGMENT DETAIL OF HOUSE - I OF PERSEFONY RESORT

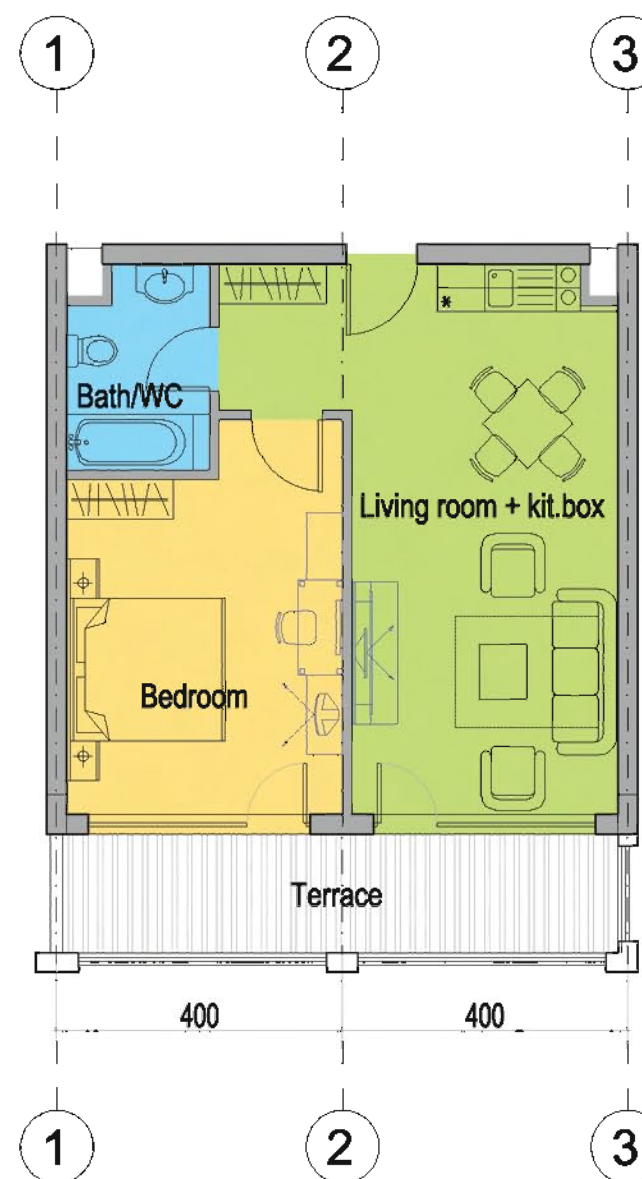


PERSEFONY RESORT

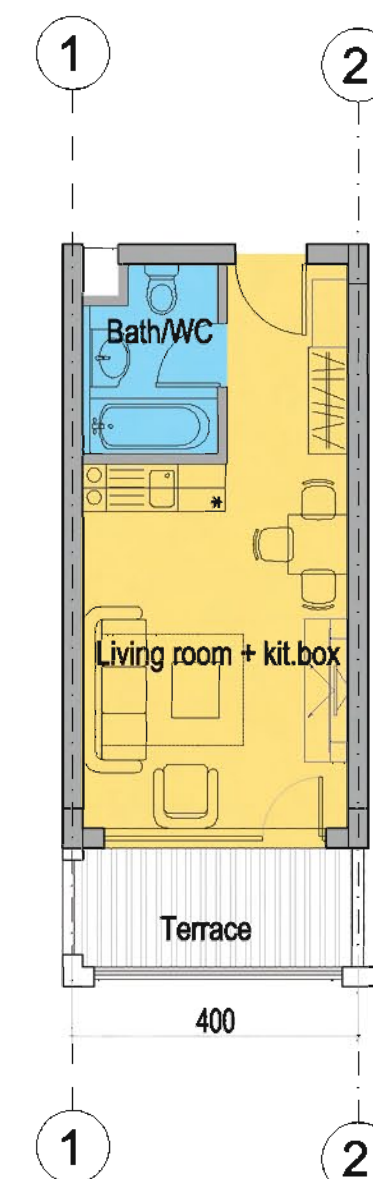
TYPES OF APARTMENTS



typical two bedroom apartment
area: from 80m² to 100m²



typical one bedroom apartment
area: from 50m² to 65m²



typical studio
area: from 30m² to 40m²

2 bedroom apartment consists of entrance, kitchen box, living room, two bedrooms and two bathrooms.

1 bedroom apartment consists of entrance, kitchen box, living room, one bedroom and one bathroom.

studio consists of entrance, kitchen box, living room, dining table and one bathroom.